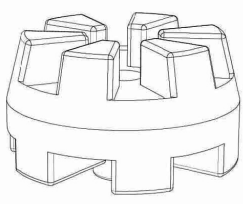
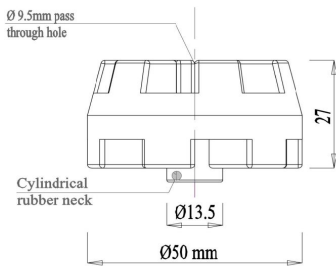


Vibro-Midi

ANTI-VIBRATION RUBBER SUPPORT



Midi



Description

The anti-vibration rubber support **Vibro-Midi** is an ingenious low cost solution for vibration problems. Due to its innovative design, Vibro-Midi provides a greater deflection over load. It can be fit with an anchor on the floor, or it can be suspended from the ceiling through threaded rods or even be placed on a metal base with a passing through screw of M8 - M10 mm. The screw does not create any sound bridge due to its cylindrical, rubber neck. The passing through screw prevents the machinery from falling, in the event of rubber part destruction. (Fail Safe) Please refer to Indicative applications leaflet in order to use metal washer properly. Notice to place also a rubber washer from the neck side, in order to avoid the contact with metal washer.

Applications

Vibro-Midi can be used as machinery antivibration support, suspension of machinery (air condition units, ventilators, air ducts etc), suspensions of floating gypsumboard ceilings, wall brace etc.

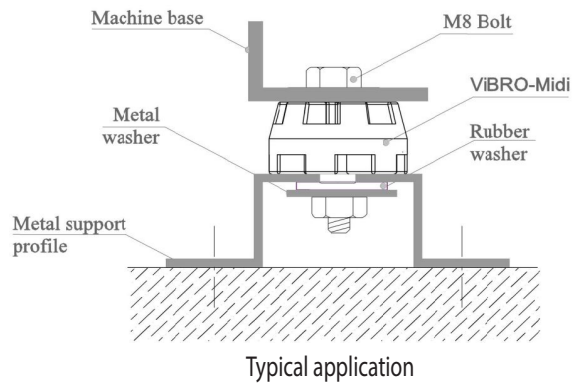
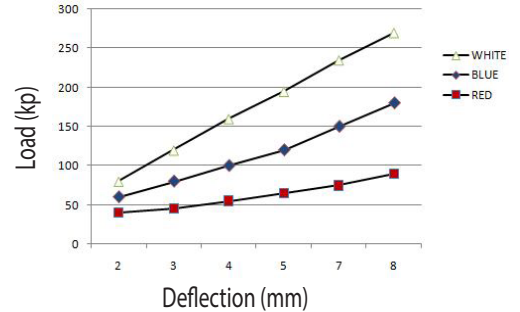
Dynamic Characteristics

Deflection (to maximum load): 8 mm
 Natural Frequency: Vibro-Midi is appropriate to face vibrations of natural frequency over 8 Hz

Selection Table

TYPE (Color Code)	MAXIMUM LOAD (Kp*)
Vibro-Midi (Red)	90
Vibro-Midi (Blue)	180
Vibro-Midi (White)	270

*1 kp = 10 N



Design and Production according to Quality Management System ISO 9001.2008 & Environmental Management System ISO 14001.2004