

Vibro-QH mini

HANGER for GYPSUM BOARD CEILINGS

Vibro-QH mini consists of a specially designed galvanized metal suspension hanger, with grappling edges for Quick & Easy connection with the standard ceiling metal profiles (60x27mm for false ceilings) according to DIN 18182-1.



The grappling edges help the adaptation with standard metal profile of the false ceilings so that they can easily be handled. Therefore, the working cost is decreased and it also facilitates the work of the installer.

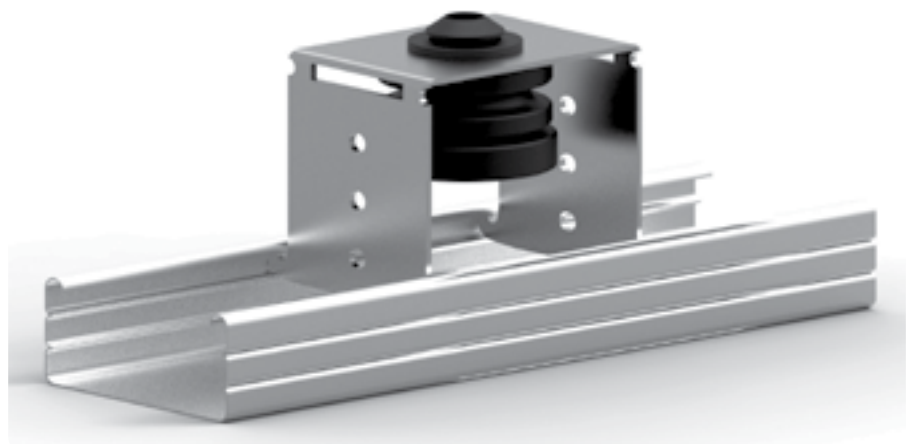
There is an 8mm hole on the rubber for a pass-through bolt (not included). A long threaded rod could be used in order to adjust the height of the false ceiling.

It can be used as sound insulation false ceiling hanger, quick connection with the metal profile of ceiling systems etc.

Dynamic Characteristics

Maximum Load: 20 daN

Natural Frequency: 10 Hz



Design and Production according to Quality Management System ISO 9001:2008 & Environmental Management System ISO 14001:2004

Dynamic Characteristics VIBRO QH mini

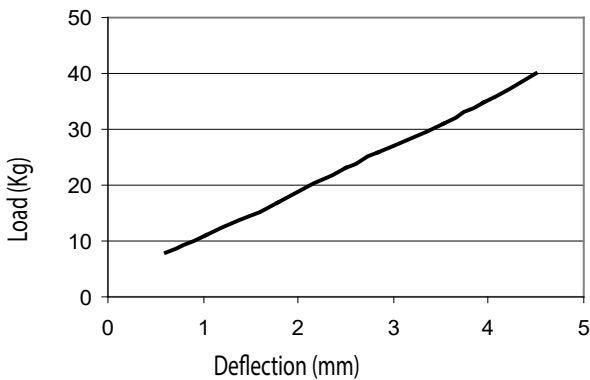
Dynamic Selection Method

The deflection (mm) has to be checked, taking into account the assessed load (g) per hanger point (chart 1).

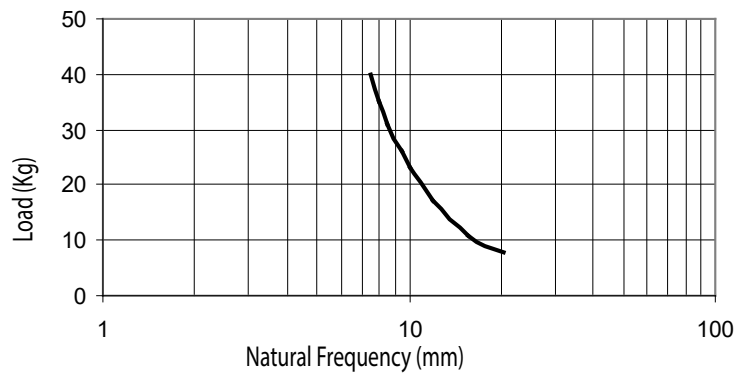
Then the natural frequency of the antivibration hangers, can be calculated (chart 2)

$$f_n = \frac{1}{2\pi} \sqrt{\frac{K}{M}}$$

LOAD- DEFLECTION DIAGRAM

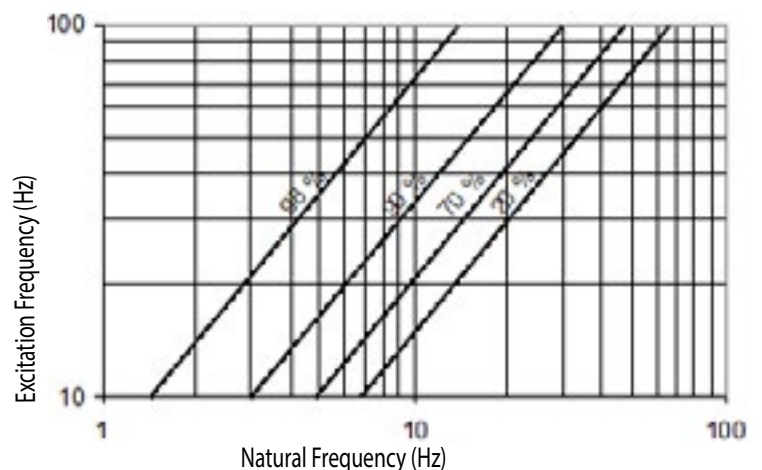


LOAD - NATURAL FREQUENCY DIAGRAM



From Chart 3, with the assessed excitation frequency of the machine ($f_e = \text{rpm}/60$) and the natural frequency derived from chart 2, the % theoretical vibration reduction (efficiency, n) can be calculated).

For achieving optimum results in special applications, we recommend to contact our technical department for selecting the best antivibration solution.



Design and Production according to Quality Management System ISO 9001.2008 & Environmental Management System ISO 14001.2004